

Activity Name	Original Duration	Planned Start	Planned Finish	2011				2012				2013				2014				2015				2016	
				Q3	Q4	Q1	Q2	Q3	Q4	Q1	Q2	Q3	Q4	Q1	Q2	Q3	Q4	Q1	Q2	Q3	Q4	Q1	Q2		
HY/2009/15 - CWB TUNNEL (CBTS SECTION)																									
SUBMISSIONS COMPLYING WITH EPs																									
EM&A Manual (rely on the Master EP's submission EP-364/2009/A Condition 2.9)																									
Baseline Monitoring Report (rely on the Master EP's submission EP-364/2009 Condition 3.3)																									
Monthly EM&A (rely on the masters EP's Submission, EP-364/2009/A Condition 3.4)																									
A dedicated website (rely on the master EP's submission, EP-364/2009/A Condition 4.2)																									
Management organization of main construction companies (FEP Condition 2.6)	1d	02-Oct-10	02-Oct-10																						
Work Schedule (FEP Condition 2.7)	1d	27-Oct-10	27-Oct-10																						
Location Plan (FEP Condition 2.8)	1d	27-Oct-10	27-Oct-10																						
Noise Management plan (FEP Condition 2.9)	1d	27-Oct-10	27-Oct-10																						
Landscape plan (FEP condition 2.10)	1d	31-Jan-11	31-Jan-11																						
EAST VENTILATION ADIT																									
CCT @ Portion 1, 2, 4, 6, 22	1315d	27-Sep-10	03-May-14																						
EV Adit @ Portion 4-Advance Works	526d	27-Sep-10	05-Mar-12																						
EV Adit Portion 1, 2, 6, 22	26d	22-Dec-11	16-Jan-12																						
EV Adit-based on Conforming Design	323d	15-Feb-12	02-Jan-13																						
TCBR1E (TS1 Area)																									
Diaphragm Wall Construction (incl. SI, & tests after completion)	107d	26-Apr-11	10-Aug-11																						
Excavation & Lateral Support, ELS	99d	16-Jul-11	22-Oct-11																						
Cut & Cover Tunnel Construction (incl. backfill)	78d	22-Oct-11	07-Jan-12																						
OHVD and Cable Trough (access from Portion 22)	76d	18-Dec-13	03-Mar-14																						
TCBR2 + TCBR3 (TS2 Area)																									
Diaphragm Wall Construction	118d	06-Jul-12	31-Oct-12																						
Excavation & Lateral Support, ELS	248d	06-Jul-12	10-Mar-13																						
Cut & Cover Tunnel Construction	164d	11-Mar-13	21-Aug-13																						
OHVD Cable Trough (Access from Portion 22)	150d	05-Aug-13	01-Jan-14																						
TCBR1W (TS4 Area)																									
Diaphragm Wall Construction	148d	28-Jun-11	22-Nov-11																						
Excavation & Lateral Support, ELS	319d	26-Jun-11	11-May-12																						
Landing Steps - Demolition/Reconstruct as footpath	40d	28-Jun-11	23-Aug-11																						

- ◆ Milestone
- ◆ Milestone
- ▬ Remaining Work
- ▬ Critical Remaining Work
- ▬ Actual Work

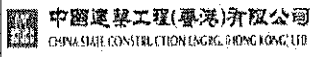
1 of 2

China State Construction Engineering (Hong Kong) Ltd.

Contract No. HY/2009/15 - Central Wan Chai By Pass - Tunnel

(CBTS Section)

Prepared by William Caluza			
Date	Revision	Checked	Approved
14-Mar-11	Revision C	ST	KL
	File: GC01a		
	(Layout:HY/2009/15: CWB - Summary)		




Activity Name	Original Duration	Planned Start	Planned Finish	2011					2012				2013				2014				2015				2016				
				Q3	Q4	Q1	Q2	Q3	Q4	Q1	Q2	Q3	Q4	Q1	Q2	Q3	Q4	Q1	Q2	Q3	Q4	Q1	Q2	Q3	Q4	Q1			
Rock Excavation	235d	25-Apr-12	15-Dec-12																										
ME4-Diaphragm Wall	114d	10-May-12	19-Oct-12																										
AS Logistics Area for Mined Tunneling Works	174d	01-Jun-12	07-Feb-13																										
ME4-ELS Works	212d	01-Jun-12	02-Apr-13																										
SCL Entrusted Works	291d	18-Jul-12	08-Sep-13																										
Cut & Cover Tunnel Construction (w/o TS4 +)	111d	17-Dec-12	06-Apr-13																										
ME4-RC Structure	146d	28-Jan-13	21-Aug-13																										
OHVD and Cable Trough (Access from TZ5/TPCWAE/TPCWAW)	180d	17-Jun-13	13-Dec-13																										
MINED TUNNEL																													
CHT Protection Works @ location A, B, C	342d	27-Sep-10	01-Feb-12																										
Tunnel works from West Portal (access from TPCWAE& TZ5)	418d	12-Mar-12	30-Oct-13																										
Tunnel Works from East Portal (Access from TS4 Area)	214d	30-Mar-12	01-Feb-13																										
Tunnel OHVD & Cable Trough	384d	02-Dec-13	22-May-15																										
TPCWAE																													
Drainage Diversion works along Hung Hing Road (Portion 19)	176d	15-Oct-10	24-Jun-11																										
Diaphragm Wall Construction	147d	20-May-11	13-Oct-11																										
Excavation & Lateral Support, ELS	421d	20-May-11	13-Jul-12																										
Rock Excavation	208d	12-Mar-12	03-Oct-12																										
AS Logistics Area for Mined Tunneling works	342d	12-May-12	18-Apr-13																										
Cut & Cover Tunnel Construction	130d	28-Jan-13	06-Jun-13																										
OHVD and Cable Trough (Access from TZ5/TPCWAW)	182d	18-Feb-15	18-Aug-15																										
TPCWAW & PORTION 11																													
Diaphragm Wall Construction + Portion 11	222d	25-Oct-13	03-Jun-14																										
Excavation & Lateral Support, ELS	478d	25-Oct-13	14-Feb-15																										
Cut & Cover Tunnel Construction	143d	30-Dec-14	21-May-15																										
OHVD and Cable Trough Installation (Access from Portion 11)	235d	22-May-15	11-Jan-16																										

- ◆ Milestone
- ◆ Milestone
- ▬ Remaining Work
- ▬ Critical Remaining Work
- ▬ Actual Work

2 of 2
China State Construction Engineering (Hong Kong) Ltd.
 Contract No. HY/2009/15 - Central Wan Chai By Pass - Tunnel
 (CBTS Section)

Prepared by William Caluza			
Date	Revision	Checked	Approved
14-Mar-11	Revision C	ST	KL
	File: 0001a		
	(Layout: HY/2009/15: CWB - Summary)		


中國建築工程(香港)有限公司
 CHINA STATE CONSTRUCTION ENGINEERING (HONG KONG) LTD.

Data Date: 20-Aug-11
 Print Date: 29-Aug-11
 CCP3-2

HY/2009/18 Central - Wan Chai Bypass (Central Interchange)

TASK filter: HL

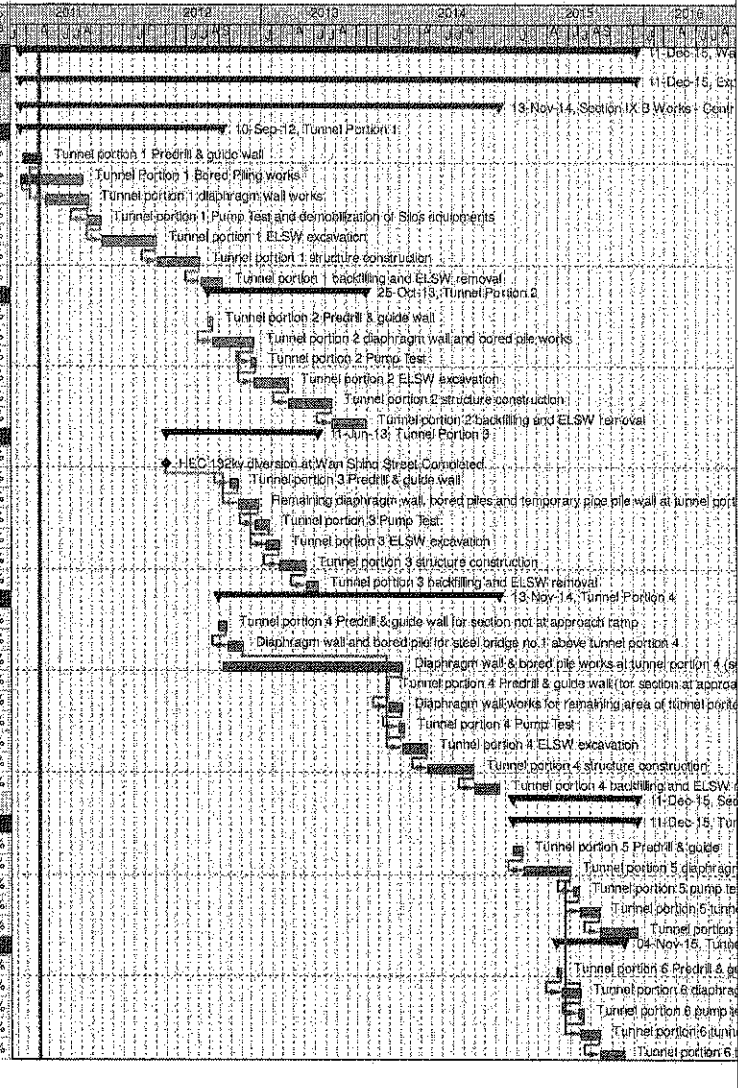


Activity Name	Start	Finish	Total Float	2011												2012												2013												2014												2015												2016												2017											
				Jan	Feb	Mar	Apr	May	Jun	Jul	Aug	Sep	Oct	Nov	Dec	Jan	Feb	Mar	Apr	May	Jun	Jul	Aug	Sep	Oct	Nov	Dec	Jan	Feb	Mar	Apr	May	Jun	Jul	Aug	Sep	Oct	Nov	Dec	Jan	Feb	Mar	Apr	May	Jun	Jul	Aug	Sep	Oct	Nov	Dec	Jan	Feb	Mar	Apr	May	Jun	Jul	Aug	Sep	Oct	Nov	Dec	Jan	Feb	Mar	Apr	May	Jun	Jul	Aug	Sep	Oct	Nov	Dec	Jan	Feb	Mar	Apr	May	Jun	Jul	Aug	Sep	Oct	Nov	Dec
CWB - Central Interchange																																																																																							
HIGH LEVEL PROGRAMME																																																																																							
DATE FOR COMMENCEMENT & COMPLETION																																																																																							
Contract Commencement	21-Sep-10 A	03-Jan-11 A																																																																																					
Contract Construction Completion		30-Jan-16	365																																																																																				
Contract DLP and Establishment Works Completion		29-Jan-17	0																																																																																				
PRELIMINARIES																																																																																							
Preliminary Submissions / Approvals	21-Sep-10 A	03-Jan-11 A																																																																																					
Commence Site Mobilisation	03-Jan-11 A																																																																																						
Mobilise, Hoarding & Site Clearance	03-Jan-11 A	14-May-11 A																																																																																					
PORTION IV WORKS																																																																																							
CWB Tunnel CH1480 to CH1580																																																																																							
Site Investigation	11-May-11 A	15-Sep-11	28																																																																																				
Construct Guide Walls	27-Jun-11 A	30-Sep-11	20																																																																																				
Construct D-Wall / Barrettes	26-Aug-11	19-Apr-12	20																																																																																				
ELS Works	20-Apr-12	11-Oct-12	19																																																																																				
Construct CWB Tunnel & Ventilation Building	12-Oct-12	21-Jun-13	19																																																																																				
Works inside CWB Tunnel	22-Jun-13	24-Sep-13	18																																																																																				
KD-8 Complete		13-Oct-13*	0																																																																																				
CWB Tunnel CH1580 to CH1646																																																																																							
Construction Diversion for Finance Street	05-Sep-11	22-Oct-11	42																																																																																				
East End of Finance St. Closed		23-Oct-11	219																																																																																				
Site Investigation	30-Jul-11 A	09-Dec-11	126																																																																																				
Construct Guide Walls	30-Jul-11 A	04-Jan-12	97																																																																																				
Construct D-Wall / Barrettes	19-Mar-12	30-Jul-12	18																																																																																				
ELS Works	31-Jul-12	19-Dec-12	22																																																																																				
Construct CWB Tunnel	20-Dec-12	16-Apr-13	20																																																																																				
Works inside CWB Tunnel	10-Aug-13	13-Dec-13	161																																																																																				
KD-7 Complete		23-May-14*	0																																																																																				
CWB Tunnel CH1646 to CH1685																																																																																							
Man Yiu St. Diverted (Possess Portion IIA, IIB)		01-Feb-12	52																																																																																				
Site Clearance & Divert Existing Utilities	01-Feb-12	29-Mar-12	60																																																																																				
Site Investigation	30-Mar-12	04-May-12	54																																																																																				
Sheet Pile / Pipe Pile / Grouting	26-Mar-12	29-May-12	63																																																																																				
Construct Guide Walls	05-May-12	02-Jun-12	55																																																																																				
Construct Barrettes	04-Jun-12	04-Jul-12	52																																																																																				
Temporary Works to Support C/W Pipes	30-May-12	25-Jun-12	61																																																																																				
ELS Works	05-Jul-12	08-Dec-12	56																																																																																				
Demolish & Reconstruct CWB Tunnel	07-Dec-12	08-Mar-13	59																																																																																				
Works Inside CWB Tunnel	22-Jun-13	23-Oct-13	212																																																																																				
Surface Works																																																																																							
Backfill, U/G Services, Roadworks & Landscaping	25-Jan-13	11-Jan-14	295																																																																																				
KD-6 Complete		03-Nov-14*	0																																																																																				
PORTION III WORKS																																																																																							
CWB Tunnel CH1685 to CH1704																																																																																							
Access to CR/II Works Area	01-Sep-11		56																																																																																				
Works Area within CR/II Preparation	01-Sep-11	31-Dec-11	61																																																																																				
Site Investigation	01-Feb-12	13-Mar-12	374																																																																																				
Construct Guide Walls	29-Feb-12	30-Mar-12	379																																																																																				
Construct D-Wall / Barrettes (thru old seawall)	31-Mar-12	12-Sep-12	376																																																																																				
Construct Man Yiu Street Temporary Diversion	24-Nov-11	31-Jan-12	52																																																																																				
ELS Works	13-Sep-12	19-Dec-12	377																																																																																				
Construct CWB Tunnel (excl. roof slab)	20-Dec-12	23-Mar-13	375																																																																																				
Break into Existing CWB Tunnel	25-Mar-13	25-Apr-13	377																																																																																				
Construct CWB Tunnel Roof Slab	09-Jul-13	19-Aug-13	304																																																																																				
Works inside CWB Tunnel	20-Aug-13	05-Nov-13	269																																																																																				
CWB Tunnel CH1704 to CH1825																																																																																							
KD-4 Complete		01-Aug-14*	0																																																																																				
Works inside CWB Tunnel	16-Oct-12	09-Oct-13	271																																																																																				
CWB Tunnel CH1825 to CH2600																																																																																							
Works inside CWB Tunnel	10-Apr-12	02-Sep-13	100																																																																																				
KD-5 Complete		31-Jan-14*	0																																																																																				
Surface Works																																																																																							
Road P1 Roadworks & Landscaping	20-Aug-13	19-Mar-14	324																																																																																				
Man Yiu St. Widening Roadworks & Landscaping	31-Jul-13	27-Nov-13	415																																																																																				
KD-3 Complete		06-Feb-15*	0																																																																																				
PORTION V WORKS																																																																																							
Mobilization, Set up, Utilities Diversion, Tree																																																																																							
Mobilization, Set up, Utilities Diversion, Tree	03-Jan-11 A	03-Jun-11 A																																																																																					
Construct Trough B Structure - Phase 1	20-May-11 A	04-Aug-12	587																																																																																				
Construct Trough B Structure - Phase 2b	12-Oct-11	06-Sep-13	335																																																																																				
Temporary Drainage Diversion	15-Jul-13	23-Oct-13	19																																																																																				
Construct Trough B Structure - Phase 2a	24-Oct-13	26-Jul-14	33																																																																																				
Construct Trough B Structure - West End Portion	21-Jul-14	15-Oct-14	19																																																																																				
Portion VI Access Date	12-Nov-12		322																																																																																				
Man Kwong St. WB Widening	12-Nov-12	05-Apr-13	320																																																																																				
Construct Retaining Wall D	29-Jul-13	20-Dec-13	90																																																																																				
Remaining Roadworks & Landscaping	16-Nov-13	15-Jul-14	111																																																																																				
KD-9 Complete		03-Nov-14*	0																																																																																				
PORTION VI WORKS																																																																																							
Portion VI Access Date																																																																																							
Portion VI Access Date	12-Nov-12		219																																																																																				
Man Kwong St. WB Widening	12-Nov-12	05-Apr-13	209																																																																																				
Retaining Walls F	15-Oct-14	02-Jun-15	95																																																																																				
Retaining Walls G	12-Nov-12	12-Oct-13	693																																																																																				
Bridge B	12-Nov-12	25-Aug-14	523																																																																																				
Trough A	21-Dec-13	14-Oct-14	63																																																																																				
Elevated Layby at Ramsey St. Flyover	23-Apr-14	29-Jul-15	185																																																																																				
Bridge A	12-Nov-12	01-Aug-14	157																																																																																				
Open Stp Road D / Man Po St.		14-Oct-14	838																																																																																				
Retaining Wall A & B	15-Oct-14	16-Jun-15	91																																																																																				
Remaining U/G Services, Roadworks & Landscaping	07-Nov-14	14-Sep-15	82																																																																																				
KD-10 Complete		30-Jan-16*	0																																																																																				
KD-16 Complete		30-Jan-16*	0																																																																																				
Landscaping Establishment (Last Area)	15-Sep-15	13-Sep-16	138																																																																																				
KD-15 Complete		29-Jan-17	0																																																																																				

Wan Chai Development Phase II - Central - Wan Chai
Bypass at Wan Chai East CONTRACT HK/2009/02

CHUN WO - CRGL JV

Activity ID	Activity Name	OD	Start	Finish	% Planned	2011	2012	2013	2014	2015	2016
Wan Chai Development Phase II - Central - Wan Chai Bypass at Wan Chai East											
Expanded and More Detailed Initial Works Programme											
Section IX B Works - Central - Wan Chai Bypass Tunnel Structure from chainage 3400 to eastern tunnel											
Tunnel Portion 1											
S9B-T1-0005	Tunnel portion 1 Predrill & guide wall	10	18-Feb-11	13-Apr-11	40%						
S9B-T1-0007	Tunnel Portion 1 Bored Piling works	105	09-Feb-11	08-Aug-11	0%						
S9B-T1-0010	Tunnel portion 1 diaphragm wall works	105	26-Apr-11	27-Aug-11	0%						
S9B-T1-0015	Tunnel portion 1 Pump Test and demobilization of Slos equipments	35	20-Aug-11	30-Sep-11	0%						
S9B-T1-0020	Tunnel portion 1 ELSW excavation	130	03-Oct-11	07-Mar-12	0%						
S9B-T1-0030	Tunnel portion 1 structure construction	100	09-Mar-12	09-Jul-12	0%						
S9B-T1-0040	Tunnel portion 1 backfilling and ELSW removal	54	10-Jul-12	10-Sep-12	0%						
Tunnel Portion 2											
S9B-T2-0105	Tunnel portion 2 Predrill & guide wall	10	02-Aug-12	13-Aug-12	0%						
S9B-T2-0010	Tunnel portion 2 diaphragm wall and bored pile works	100	14-Aug-12	10-Dec-12	0%						
S9B-T2-0015	Tunnel portion 2 Pump Test	14	03-Dec-12	18-Dec-12	0%						
S9B-T2-0020	Tunnel portion 2 ELSW excavation	80	11-Dec-12	19-Mar-13	0%						
S9B-T2-0030	Tunnel portion 2 structure construction	100	20-Mar-13	22-Jul-13	0%						
S9B-T2-0040	Tunnel portion 2 backfilling and ELSW removal	80	23-Jul-13	25-Oct-13	0%						
Tunnel Portion 3											
S9B-T3-0005	HEC 132kv diversion at Wan Shing Street Completed	0	01-Apr-12*		0%						
S9B-T3-0008	Tunnel portion 3 Predrill & guide wall	20	02-Oct-12	25-Oct-12	0%						
S9B-T3-0010	Remaining diaphragm wall, bored piles and temporary pipe pile wall at tunnel portion 3	50	25-Oct-12	22-Dec-12	0%						
S9B-T3-0015	Tunnel portion 3 Pump Test	30	15-Dec-12	22-Jan-13	0%						
S9B-T3-0020	Tunnel portion 3 ELSW excavation	30	15-Jan-13	20-Feb-13	0%						
S9B-T3-0030	Tunnel portion 3 structure construction	80	21-Feb-13	06-May-13	0%						
S9B-T3-0040	Tunnel portion 3 backfilling and ELSW removal	30	07-May-13	11-Jun-13	0%						
Tunnel Portion 4											
S9B-T4-0005	Tunnel portion 4 Predrill & guide wall for section not at approach ramp	21	30-Aug-12	22-Sep-12	0%						
S9B-T4-0010	Diaphragm wall and bored pile for steel bridge no. 1 above tunnel portion 4	40	24-Sep-12	10-Nov-12	0%						
S9B-T4-0020	Diaphragm wall & bored pile works at tunnel portion 4 (section not at approach ramp)	420	11-Sep-12	05-Feb-14	0%						
S9B-T4-0025	Tunnel portion 4 Predrill & guide wall (for section at approach ramp)	5	23-Dec-13	30-Dec-13	0%						
S9B-T4-0030	Diaphragm wall works for remaining area of tunnel portion 4 (for section at approach ramp)	30	31-Dec-13	06-Feb-14	0%						
S9B-T4-0035	Tunnel portion 4 Pump Test	14	28-Jan-14	14-Feb-14	0%						
S9B-T4-0040	Tunnel portion 4 ELSW excavation	60	07-Feb-14	19-Apr-14	0%						
S9B-T4-0050	Tunnel portion 4 structure construction	110	22-Apr-14	01-Sep-14	0%						
S9B-T4-0060	Tunnel portion 4 backfilling and ELSW removal	60	02-Sep-14	13-Nov-14	0%						
Section X Works - Central - Wan Chai Bypass Tunnel Structure from western tunnel to chainage 3400											
Tunnel Portion 5											
S10-T5-0005	Tunnel portion 5 Predrill & guide	21	23-Dec-14	19-Jan-15	0%						
S10-T5-0010	Tunnel portion 5 diaphragm wall & bored pile works	110	20-Jan-15	04-Jun-15	0%						
S10-T5-0015	Tunnel portion 5 pump test	14	13-Jun-15	30-Jun-15	0%						
S10-T5-0020	Tunnel portion 5 tunnel ELSW excavation	45	04-Jul-15	25-Aug-15	0%						
S10-T5-0030	Tunnel portion 5 tunnel structure construction	90	26-Aug-15	11-Dec-15	0%						
Tunnel Portion 6											
S10-T6-0040	Tunnel portion 6 Predrill & guide	12	24-Apr-15	08-May-15	0%						
S10-T6-0050	Tunnel portion 6 diaphragm wall & bored pile works at Area 10	45	09-May-15	09-Jul-15	0%						
S10-T6-0055	Tunnel portion 6 pump test	14	25-Jun-15	11-Jul-15	0%						
S10-T6-0060	Tunnel portion 6 tunnel ELSW excavation at Area 10	45	04-Jul-15	26-Aug-15	0%						
S10-T6-0070	Tunnel portion 6 tunnel structure construction at Area 10	58	26-Aug-15	04-Nov-15	0%						



CEDD CONTRACT NO. HK/2009/02
 Wan Chai Development Phase II - Central Wan Chai Bypass at Wan Chai East (Contract 2)
 Revised Programme dated 7 April 2011

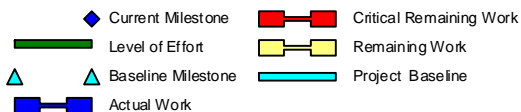
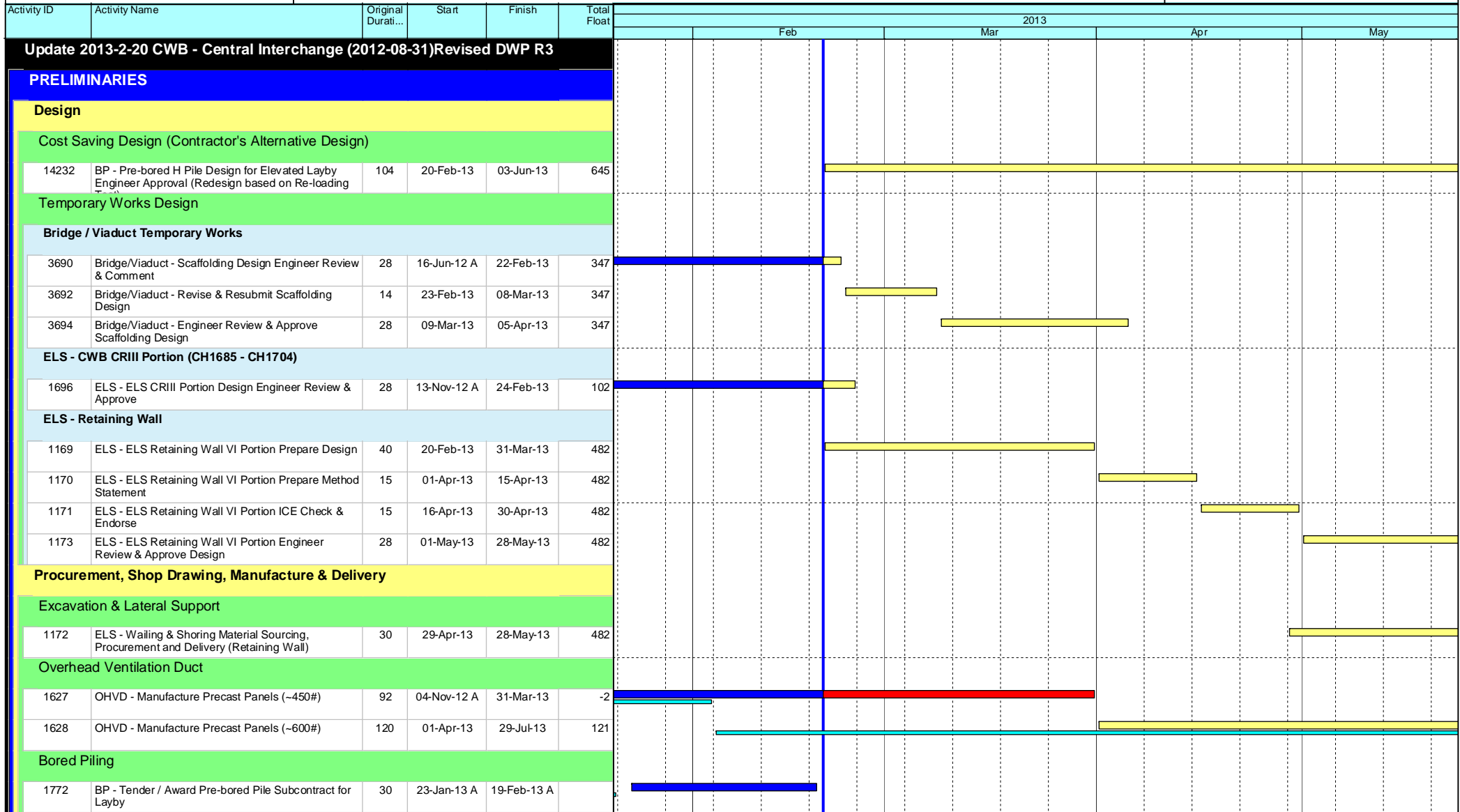
Date	Revision	Checked	Approved
07-Apr-11		KT	KY

Page 10 of 11

HY/2009/18 Central - Wan Chai Bypass (Central Interchange)



TASK filters: 3 Months, Not HL.



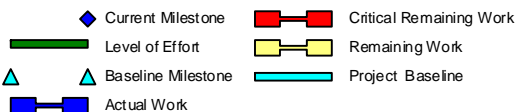
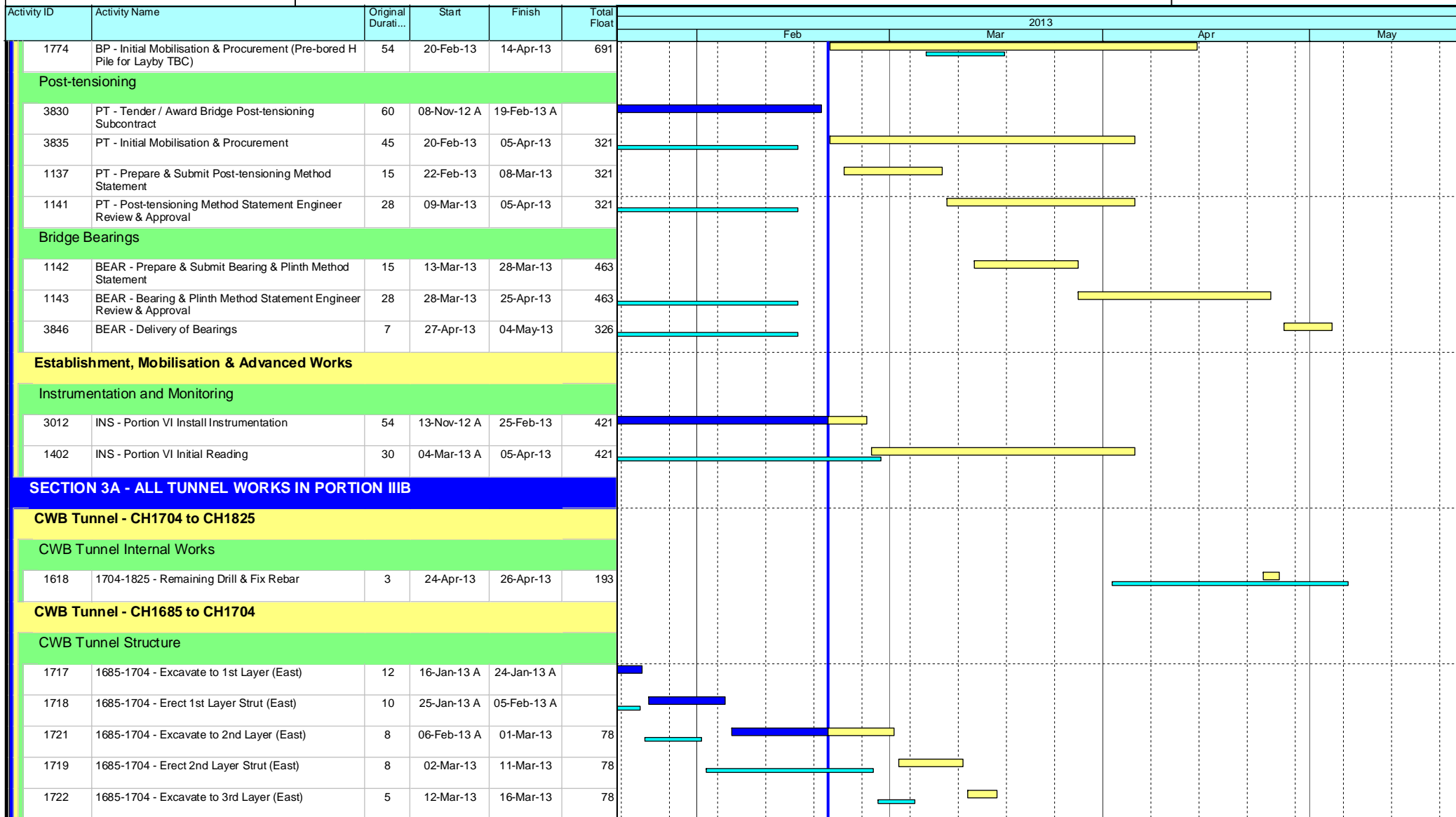
Leighton Contractors (Asia) Limited Programme Update 29 (Feb 2013) THREE MONTH ROLLING

Project ID: U029
 Baseline: DCP4-4
 Layout: Update Three Month Rolling U029
 Page 1 of 7

Date	Revision	Checked	Approv...
21-Feb-13	U029	EC	RW
21-Jan-13	U028	EC	RW

HY/2009/18 Central - Wan Chai Bypass (Central Interchange)

TASK filters: 3 Months, Not HL.



Leighton Contractors (Asia) Limited Programme Update 29 (Feb 2013) THREE MONTH ROLLING

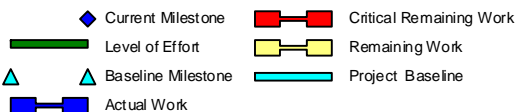
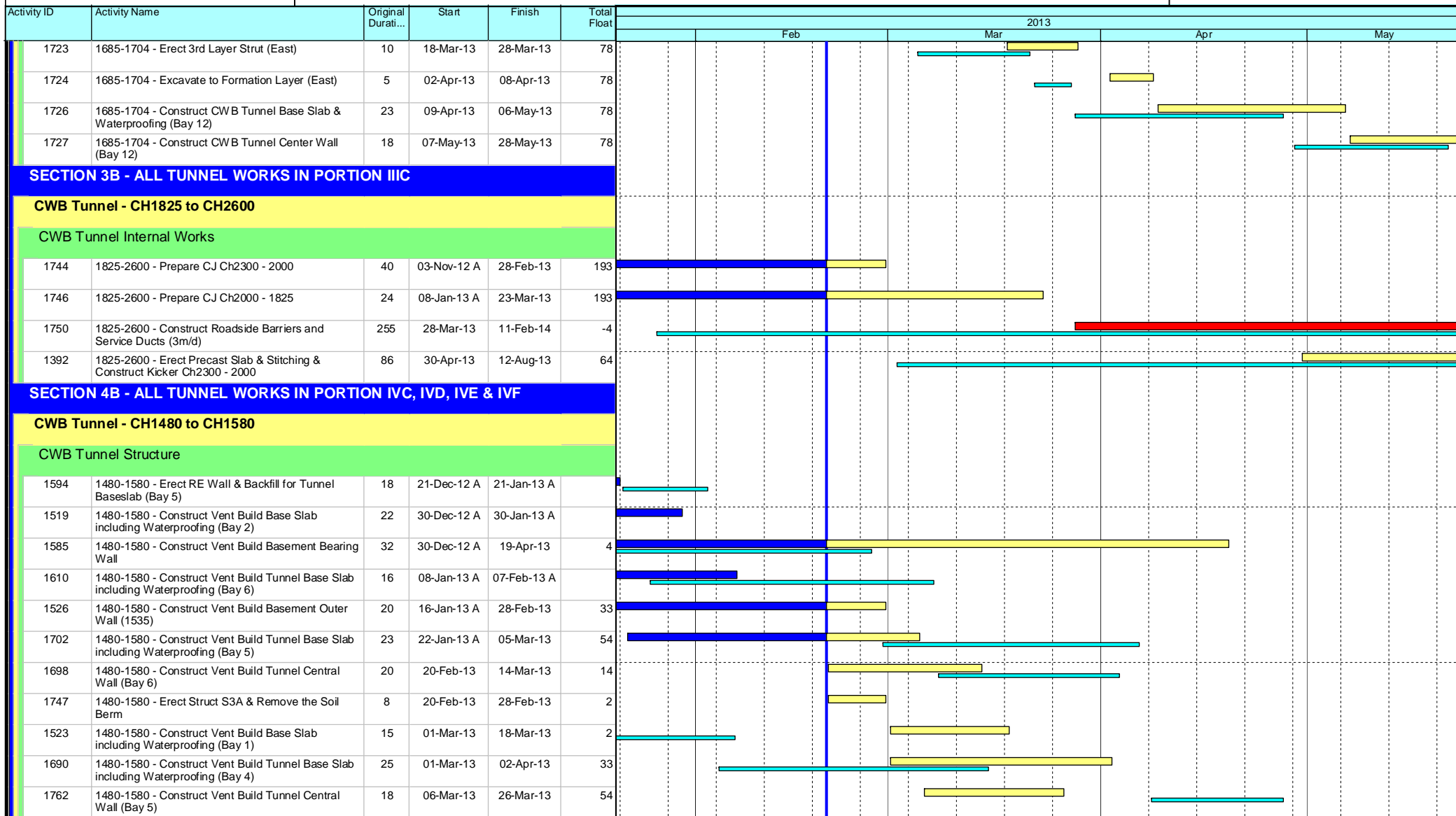
Project ID: U029
Baseline: DCP4-4
Layout: Update Three Month Rolling U029
Page 2 of 7

Date	Revision	Checked	Approv...
21-Feb-13	U029	EC	RW
21-Jan-13	U028	EC	RW

HY/2009/18 Central - Wan Chai Bypass (Central Interchange)



TASK filters: 3 Months, Not HL.



Leighton Contractors (Asia) Limited Programme Update 29 (Feb 2013) THREE MONTH ROLLING

Project ID: U029
 Baseline: DCP4-4
 Layout: Update Three Month Rolling U029
 Page 3 of 7

Date	Revision	Checked	Approv...
21-Feb-13	U029	EC	RW
21-Jan-13	U028	EC	RW

HY/2009/18 Central - Wan Chai Bypass (Central Interchange)



TASK filters: 3 Months, Not HL.

Activity ID	Activity Name	Original Durati...	Start	Finish	Total Float	2013			
						Feb	Mar	Apr	May
1748	1480-1580 - Dismantle of Basement Struts (Layer 3 & 4)	21	08-Mar-13	05-Apr-13	16	[Gantt bar: Feb 8 to Mar 5]			
1699	1480-1580 - Construct Vent Build Tunnel OHVD & Kickers (Bay 6)	18	15-Mar-13	09-Apr-13	14	[Gantt bar: Mar 15 to Apr 9]			
1527	1480-1580 - Construct Vent Build Basement Internal Wall	15	18-Mar-13	08-Apr-13	2	[Gantt bar: Mar 18 to Apr 8]			
1524	1480-1580 - Construct Vent Build Basement Outer Wall & Backfill (1480)	23	19-Mar-13	18-Apr-13	20	[Gantt bar: Mar 19 to Apr 18]			
1580	1480-1580 - Construct Vent Build Mezzanine Floor Slab	20	25-Mar-13	20-Apr-13	2	[Gantt bar: Mar 25 to Apr 20]			
1754	1480-1580 - Construct Vent Build Tunnel Central Wall (Bay 4)	18	03-Apr-13	24-Apr-13	78	[Gantt bar: Apr 3 to Apr 24]			
1761	1480-1580 - Construct Vent Build Tunnel OHVD & Kickers (Bay 5)	18	08-Apr-13	27-Apr-13	54	[Gantt bar: Apr 8 to Apr 27]			
1725	1480-1580 - Construct Vent Build Tunnel Top Slab (Bay 6)	40	10-Apr-13	28-May-13	14	[Gantt bar: Apr 10 to May 28]			
1590	1480-1580 - Construct Vent Build Tunnel Base Slab (Bay 2)	25	22-Apr-13	22-May-13	3	[Gantt bar: Apr 22 to May 22]			
1760	1480-1580 - Construct Vent Build Tunnel OHVD & Kickers (Bay 4 - Top Down Slab)	18	25-Apr-13	16-May-13	78	[Gantt bar: Apr 25 to May 16]			
1592	1480-1580 - Construct Vent Build Tunnel Base Slab (Bay 3)	25	29-Apr-13	29-May-13	2	[Gantt bar: Apr 29 to May 29]			
1764	1480-1580 - Construct Vent Build Tunnel Top Slab (Bay 5)	39	29-Apr-13	15-Jun-13	54	[Gantt bar: Apr 29 to Jun 15]			
1752	1480-1580 - Construct Vent Build Tunnel Base Slab (Bay 1)	21	10-May-13	04-Jun-13	3	[Gantt bar: May 10 to Jun 4]			

SECTION 4A - ALL TUNNEL WORKS IN PORTION IVA, IVB, IVG & IVH

CWB Tunnel - CH1580 to CH1646

CWB Tunnel Structure

1705	1580-1646 - Excavate 2nd Layer (East)	8	22-Dec-12 A	01-Feb-13 A		[Gantt bar: Dec 22 to Feb 1]			
11306	1580-1646 - Excavate 4th Layer (West)	7	03-Jan-13 A	26-Jan-13 A		[Gantt bar: Jan 3 to Jan 26]			
1734	1580-1646 - Construct CWB Tunnel Base Slab & Waterproofing (Bay 7 & 8)	20	11-Jan-13 A	11-Mar-13	3	[Gantt bar: Jan 11 to Mar 11]			
1706	1580-1646 - Erect 2nd Layer Strut (East)	6	02-Feb-13 A	21-Feb-13	1	[Gantt bar: Feb 2 to Feb 21]			
1707	1580-1646 - Excavate 3rd Layer (East)	4	22-Feb-13	26-Feb-13	1	[Gantt bar: Feb 22 to Feb 26]			
1708	1580-1646 - Erect 3rd Layer Strut (East)	6	27-Feb-13	05-Mar-13	1	[Gantt bar: Feb 27 to Mar 5]			
1737	1580-1646 - Construct CWB Tunnel Center Wall (Bay 7 & 8)	18	02-Mar-13	23-Mar-13	3	[Gantt bar: Mar 2 to Mar 23]			
1709	1580-1646 - Excavate 4th Layer (East)	4	06-Mar-13	09-Mar-13	1	[Gantt bar: Mar 6 to Mar 9]			
1735	1580-1646 - Construct CWB Tunnel Base Slab & Waterproofing (Bay 9)	20	11-Mar-13	06-Apr-13	1	[Gantt bar: Mar 11 to Apr 6]			

- ◆ Current Milestone
- Critical Remaining Work
- Level of Effort
- Remaining Work
- ▲ Baseline Milestone
- Project Baseline
- Actual Work

Leighton Contractors (Asia) Limited Programme Update 29 (Feb 2013) THREE MONTH ROLLING

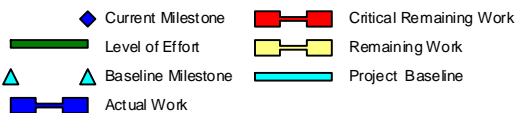
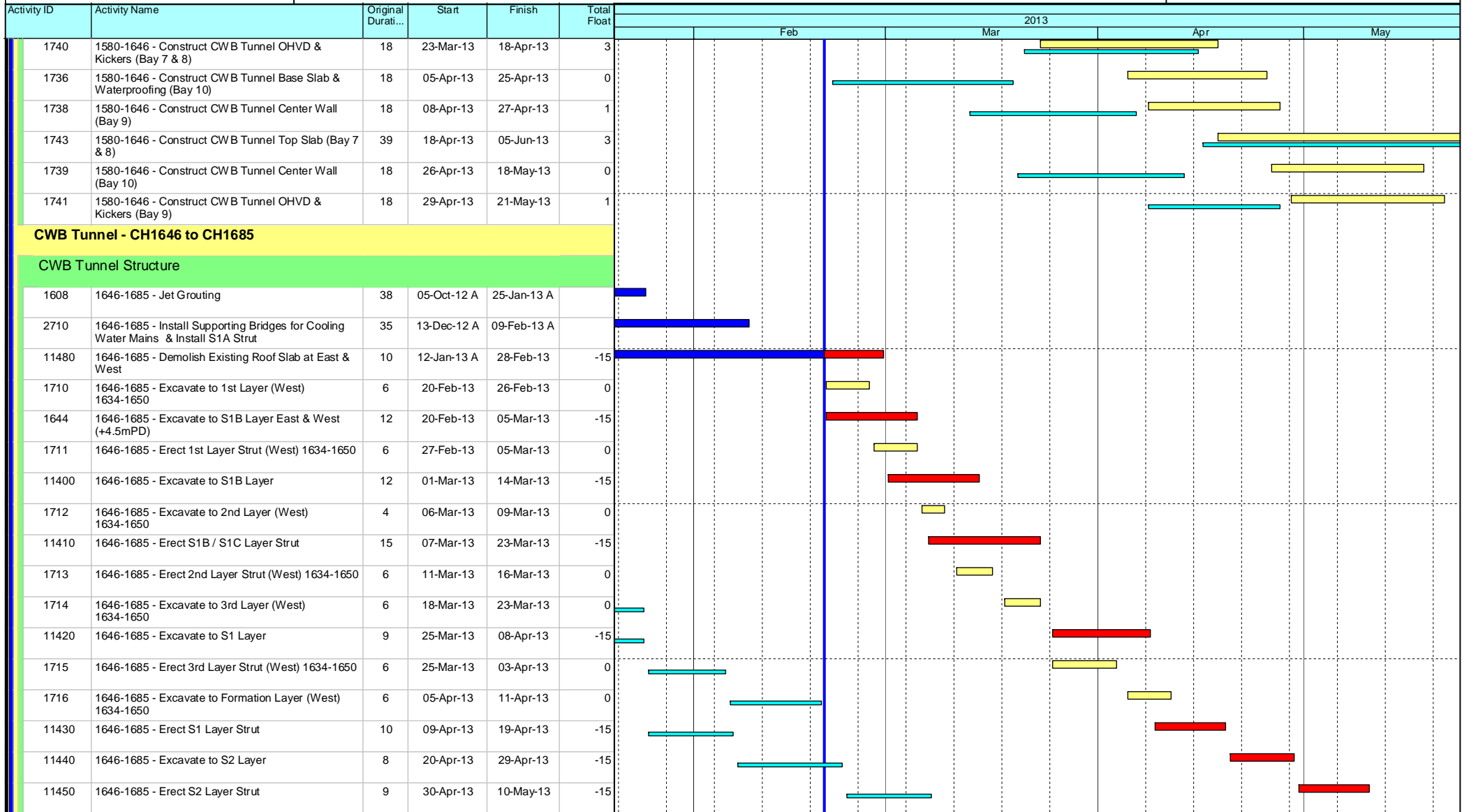
Project ID: U029
 Baseline: DCP4-4
 Layout: Update Three Month Rolling U029
 Page 4 of 7

Date	Revision	Checked	Approv...
21-Feb-13	U029	EC	RW
21-Jan-13	U028	EC	RW

HY/2009/18 Central - Wan Chai Bypass (Central Interchange)



TASK filters: 3 Months, Not HL.



Leighton Contractors (Asia) Limited Programme Update 29 (Feb 2013) THREE MONTH ROLLING

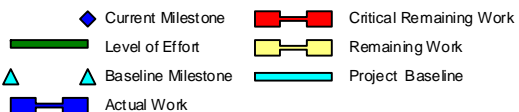
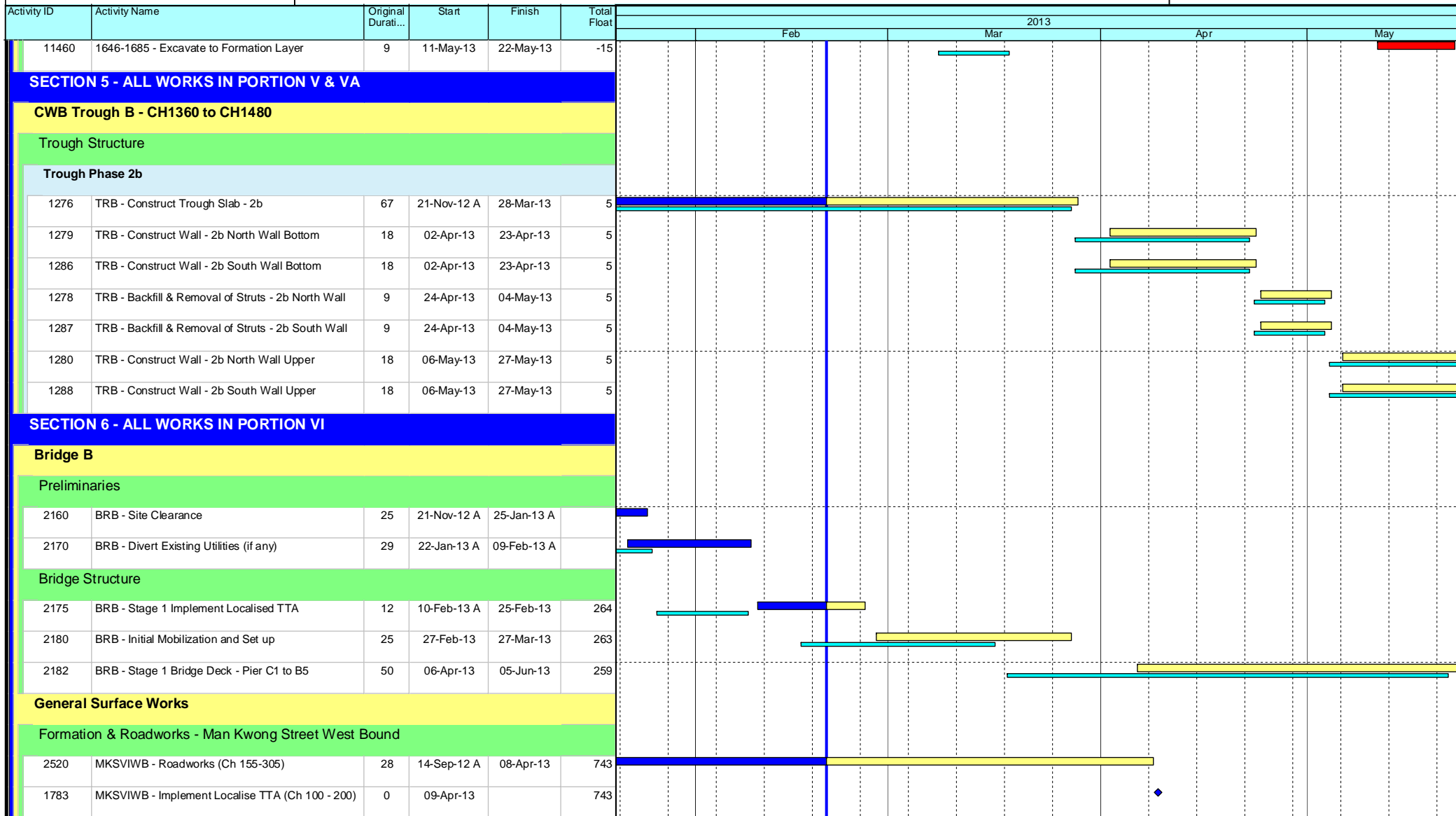
Project ID: U029
 Baseline: DCP4-4
 Layout: Update Three Month Rolling U029
 Page 5 of 7

Date	Revision	Checked	Approv...
21-Feb-13	U029	EC	RW
21-Jan-13	U028	EC	RW

HY/2009/18 Central - Wan Chai Bypass (Central Interchange)



TASK filters: 3 Months, Not HL.



Leighton Contractors (Asia) Limited Programme Update 29 (Feb 2013) THREE MONTH ROLLING

Project ID: U029
 Baseline: DCP4-4
 Layout: Update Three Month Rolling U029
 Page 6 of 7

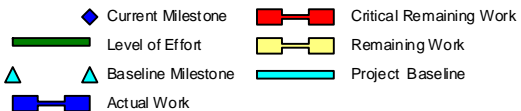
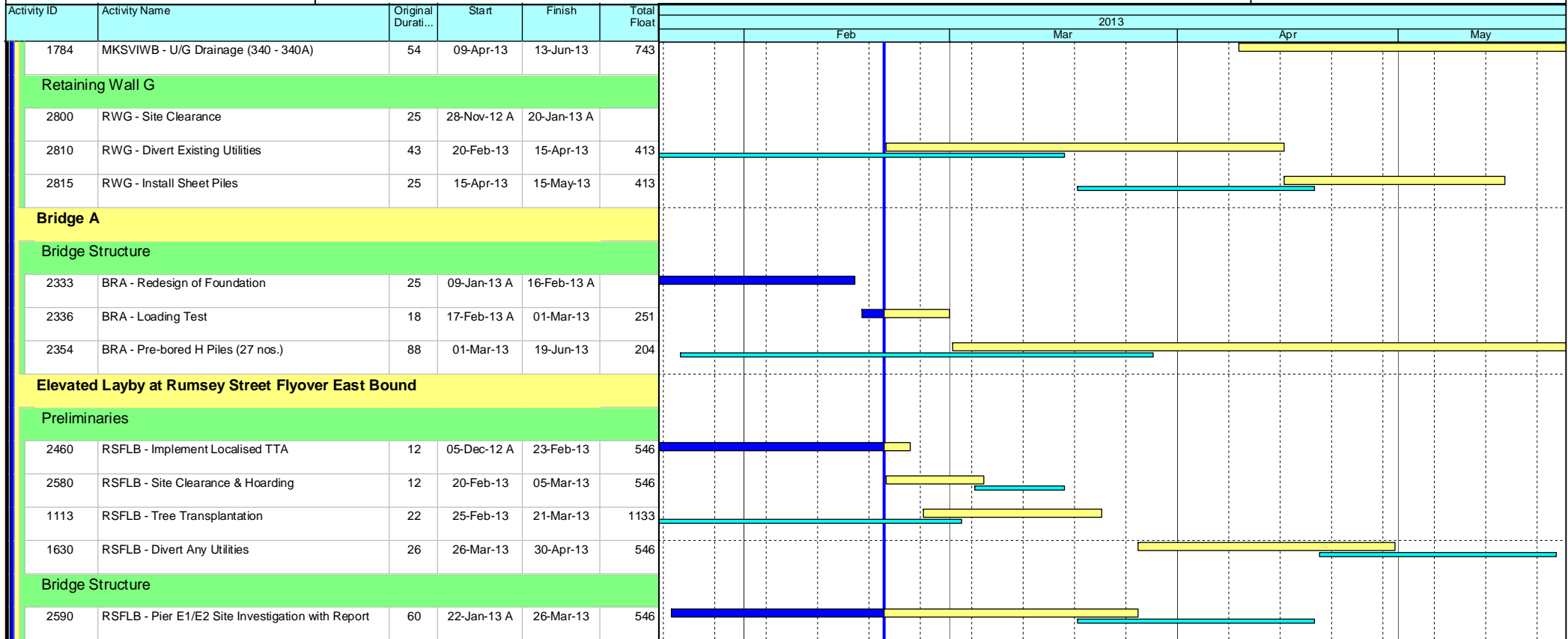
Date	Revision	Checked	Approv...
21-Feb-13	U029	EC	RW
21-Jan-13	U028	EC	RW

Data Date: 20-Feb-13

HY/2009/18 Central - Wan Chai Bypass (Central Interchange)



TASK filters: 3 Months, Not HL.



Leighton Contractors (Asia) Limited Programme Update 29 (Feb 2013) THREE MONTH ROLLING

Project ID: U029
Baseline: DCP4-4
Layout: Update Three Month Rolling U029
Page 7 of 7

Date	Revision	Checked	Approv...
21-Feb-13	U029	EC	RW
21-Jan-13	U028	EC	RW

Activity ID	Activity Name	Rem Dur	Start	Finish	2013																
					February					March					April				May		
					21	28	04	11	18	25	04	11	18	25	01	08	15	22	29	06	13
3MRP - Feb 2013 to May 2013																					
02 - PRE-CONSTRUCTION WORKS																					
02.2 - Contractor's Submission																					
0220-1360	Tunnel Structures Materials - Submission	12	19-Jul-12 A	03-Mar-13	Tunnel Structures Materials - Submission																
0220-1370	Tunnel Structures Materials - ER Review/Comment	14	14-Jan-13 A	17-Mar-13	Tunnel Structures Materials - ER Review/Comment																
0220-1380	Tunnel Structures Materials - Resubmission	7	28-Jan-13 A	24-Mar-13	Tunnel Structures Materials - Resubmission																
0220-1390	Tunnel Structures Materials - ER Approval	21	25-Mar-13	14-Apr-13	Tunnel Structures Materials - ER Approval																
0220-1400	Tunnel Structures Materials - Procurement & Delivery	60	15-Apr-13	13-Jun-13	Tunnel Structures Materials - Procurement & Delivery																
0220-1500	Bridge Bearing - Procurement & Delivery (D8/D9/D10)	1	24-Sep-12 A	20-Feb-13	Bridge Bearing - Procurement & Delivery (D8/D9/D10)																
02.3 - Method Statement / Shop Drawings																					
0230-1280	MS Cut & Cover Tunnel ELS - Resubmission	0	13-Jul-12 A	06-Feb-13 A	MS Cut & Cover Tunnel ELS - Resubmission																
0230-1290	MS Cut & Cover Tunnel ELS - ER Approval	9	07-Aug-12 A	28-Feb-13	MS Cut & Cover Tunnel ELS - ER Approval																
0230-1360	MS Pre-cast Segment Launching by LG- Resubmission	8	21-Jan-13 A	27-Feb-13	MS Pre-cast Segment Launching by LG- Resubmission																
0230-1370	MS Pre-cast Segment Launching by LG - ER Approval	28	28-Feb-13	27-Mar-13	MS Pre-cast Segment Launching by LG - ER Approval																
0230-1375	MS Pre-cast Pier Segment Erection by Crane - Resubmission	8	21-Jan-13 A	27-Feb-13	MS Pre-cast Pier Segment Erection by Crane - Resubmission																
0230-1378	MS Pre-cast Pier Segment Erection by Crane - ER Approval	6	28-Feb-13	05-Mar-13	MS Pre-cast Pier Segment Erection by Crane - ER Approval																
0230-1480	MS Stressing Tendons - Resubmission	0	08-Aug-12 A	09-Feb-13 A	MS Stressing Tendons - Resubmission																
0230-1490	MS Stressing Tendons - ER Approval	18	11-Feb-13 A	09-Mar-13	MS Stressing Tendons - ER Approval																
0230-1700	MS Temporary Bridge TA1 - Submission	24	16-Mar-13	08-Apr-13	MS Temporary Bridge TA1 - Submission																
0230-1710	MS Temporary Bridge TA1 - ER Review & Comment	28	09-Apr-13	06-May-13	MS Temporary Bridge TA1 - ER Review & Comment																
0230-1720	MS Temporary Bridge TA1 - Resubmission	12	07-May-13	18-May-13	MS Temporary Bridge TA1 - Resubmission																
0230-1320	MS Pre-casting Beam - Resubmission	0	03-Dec-12 A	09-Feb-13 A	MS Pre-casting Beam - Resubmission																
0230-1330	MS Pre-casting Beam - ER Approval	9	11-Feb-13 A	28-Feb-13	MS Pre-casting Beam - ER Approval																
0230-1860	MS Marine Pier Crosshead Construction - Submission	12	20-Feb-13	03-Mar-13	MS Marine Pier Crosshead Construction - Submission																
0230-1870	MS Marine Pier Crosshead Construction - ER Review & Comment	18	04-Mar-13	21-Mar-13	MS Marine Pier Crosshead Construction - ER Review & Comment																
0230-1880	MS Marine Pier Crosshead Construction - Resubmission	6	22-Mar-13	27-Mar-13	MS Marine Pier Crosshead Construction - Resubmission																
0230-1890	MS Marine Pier Crosshead Construction - ER Approval	12	28-Mar-13	08-Apr-13	MS Marine Pier Crosshead Construction - ER Approval																
0230-1900	MS Marine Temp Pile Removal - Submission	18	20-Feb-13	09-Mar-13	MS Marine Temp Pile Removal - Submission																
0230-1910	MS Marine Temp Pile Removal - ER Review & Comment	18	10-Mar-13	27-Mar-13	MS Marine Temp Pile Removal - ER Review & Comment																
0230-1920	MS Marine Temp Pile Removal - Resubmission	6	28-Mar-13	02-Apr-13	MS Marine Temp Pile Removal - Resubmission																
0230-1930	MS Marine Temp Pile Removal - ER Approval	18	03-Apr-13	20-Apr-13	MS Marine Temp Pile Removal - ER Approval																
02.4 - Contractor's Design and Build Items																					
0240-1010	Temp Bridge "TA1" Design - Prep & Submit	24	16-Dec-11 A	15-Mar-13	Temp Bridge "TA1" Design - Prep & Submit																
0240-1020	Temp Bridge "TA1" Design - ER review and comment	28	16-Mar-13	12-Apr-13	Temp Bridge "TA1" Design - ER review and comment																
0240-1030	Temp Bridge "TA1" Design - Resubmission	28	13-Apr-13	10-May-13	Temp Bridge "TA1" Design - Resubmission																
0240-1035	Temp Bridge "TA1" Design - ER Approval	21	11-May-13	31-May-13	Temp Bridge "TA1" Design - ER Approval																
0240-1041	Temp Bridge "TD" Design - Submission	48	20-Feb-13*	08-Apr-13	Temp Bridge "TD" Design - Submission																
0240-1042	Temp Bridge "TD" Design - ER review and comment	28	09-Apr-13	06-May-13	Temp Bridge "TD" Design - ER review and comment																
0240-1043	Temp Bridge "TD" Design - Resubmission	36	07-May-13	11-Jun-13	Temp Bridge "TD" Design - Resubmission																
0240-1105	Int. Noise Enclosure Structural Design - Submission	42	20-Feb-13	02-Apr-13	Int. Noise Enclosure Structural Design - Submission																
0240-1110	Int. Noise Enclosure Structural Design - ER Review/Resubmission	48	03-Apr-13	20-May-13	Int. Noise Enclosure Structural Design - ER Review/Resubmission																
0240-1126	Noise Barrier Design Structural Design - Submission	42	20-Feb-13	02-Apr-13	Noise Barrier Design Structural Design - Submission																
0240-1127	Noise Barrier Design Structural Design - ER Review/Resubmission	48	03-Apr-13	20-May-13	Noise Barrier Design Structural Design - ER Review/Resubmission																
0240-1150	Perm. Noise Enclosure Structural Design - Submission	42	20-Feb-13	02-Apr-13	Perm. Noise Enclosure Structural Design - Submission																

- Remaining Level of Effort
- Actual Level of Effort
- Actual Work
- Remaining Work
- Critical Remaining Work
- ◆ Milestone

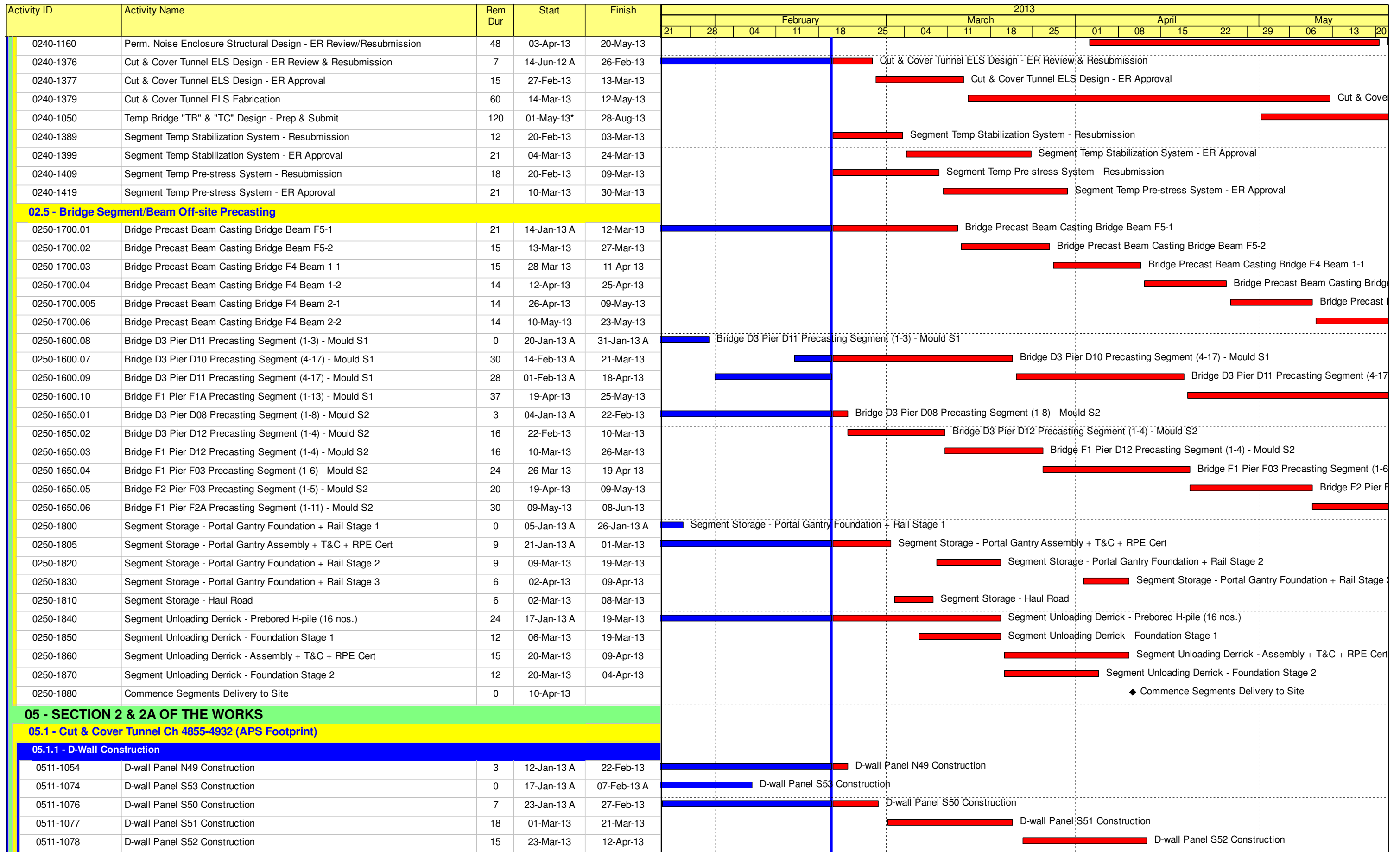
Contract HY/2009/19

Three Month Rolling Programme (20 FEB 2013 to 19 MAY 2013)

3MRP

3MRP - Feb 2013 to May 2013

Page 1 of 7



- Remaining Level of Effort
- Actual Level of Effort
- Actual Work
- Remaining Work
- Critical Remaining Work
- Milestone

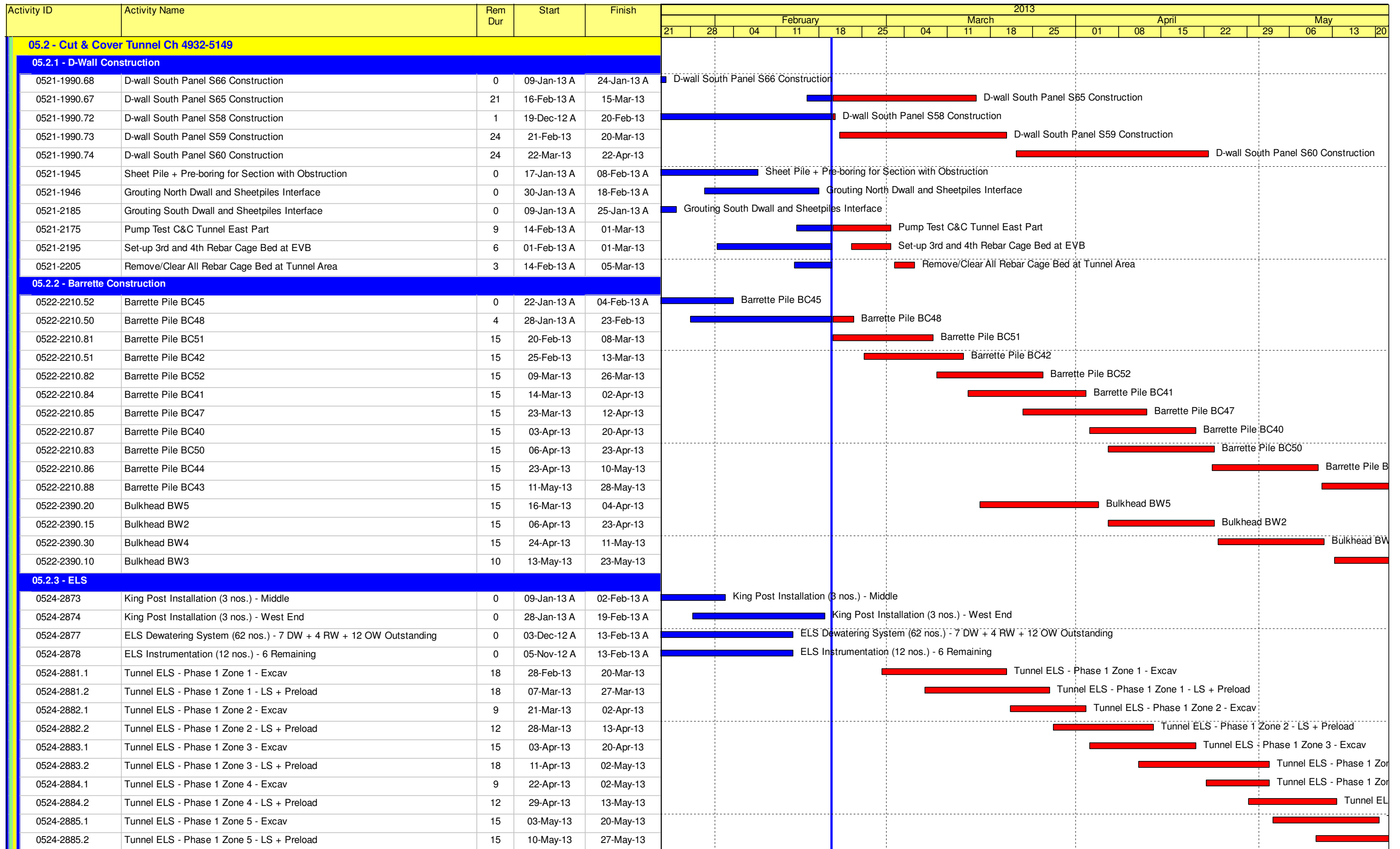
Contract HY/2009/19

Three Month Rolling Programme (20 FEB 2013 to 19 MAY 2013)

3MRP

3MRP - Feb 2013 to May 2013

Page 2 of 7



- Remaining Level of Effort
- Actual Level of Effort
- Actual Work
- Remaining Work
- Critical Remaining Work
- ◆ Milestone

Contract HY/2009/19

Three Month Rolling Programme (20 FEB 2013 to 19 MAY 2013)

3MRP

3MRP - Feb 2013 to May 2013

Page 3 of 7

Activity ID	Activity Name	Rem Dur	Start	Finish	2013																
					February					March					April				May		
					21	28	04	11	18	25	04	11	18	25	01	08	15	22	29	06	13
05.3 - Box Culvert T1																					
0530-3071	Bay 2 - ELS + Blinding	0	12-Jan-13 A	04-Feb-13 A	Bay 2 - ELS + Blinding																
0530-3072	Bay 2 - Base Slab	7	20-Feb-13	27-Feb-13	Bay 2 - Base Slab																
0530-3073	Bay 2 - Wall & Roof	12	28-Feb-13	13-Mar-13	Bay 2 - Wall & Roof																
0530-3074	Bay 2 - Backfilling + Reinstatement	12	14-Mar-13	27-Mar-13	Bay 2 - Backfilling + Reinstatement																
0530-3076	Bay 1 - TTM Implementation + Clearance	12	28-Mar-13	13-Apr-13	Bay 1 - TTM Implementation + Clearance																
0530-3077	Bay 1 - Install Sheet Piles	12	15-Apr-13	27-Apr-13	Bay 1 - Install Sheet Piles																
0530-3078	Bay 1 - ELS	12	29-Apr-13	13-May-13	Bay 1 - ELS																
0530-3079	Bay 1 - Break Roof of Existing Box Culvert	12	14-May-13	27-May-13																	
0530-3113	Bay 9 - Fabrication of Precast Units	0	26-Nov-12 A	08-Feb-13 A	Bay 9 - Fabrication of Precast Units																
0530-3117	Fabrication of Temp Access Bridge Extension Across U-channel	0	02-Feb-13 A	19-Feb-13 A	Fabrication of Temp Access Bridge Extension Across U-channel																
0530-3112	Bay 9 - Excavation	17	12-Dec-12 A	11-Mar-13	Bay 9 - Excavation																
0530-3114	Bay 9 - Precast Unit Erection	9	12-Mar-13	21-Mar-13	Bay 9 - Precast Unit Erection																
0530-3118	Erection of Temp Access Bridge extension Across U-channel	0	02-Feb-13 A	19-Feb-13 A	Erection of Temp Access Bridge extension Across U-channel																
0530-3368	Bay 9 - Cast In-Situ	18	22-Mar-13	15-Apr-13	Bay 9 - Cast In-Situ																
0530-3378	Bay 9 - Backfilling	12	16-Apr-13	29-Apr-13	Bay 9 - Backfilling																
0530-3085	Bay 6-8 - Temporary Pre-bored H-pile	20	15-Feb-13 A	14-Mar-13	Bay 6-8 - Temporary Pre-bored H-pile																
0530-3087	Bay 6-8 - Excavation	24	15-Mar-13	15-Apr-13	Bay 6-8 - Excavation																
0530-3090	Bay 6-8 - Base Slab	36	16-Apr-13	28-May-13																	
0530-3095	Bay 6-8 - Roof Slab	36	08-May-13	19-Jun-13																	
06 - SECTION 3 OF THE WORKS																					
06.1 - Westbound - Pier 29-34																					
0610-2110	Pier 29 Pre-drilling at Portion VB (4 nos)	24	02-Apr-13*	30-Apr-13	Pier 29 Pre-drilling at Portion																
0610-2115	Pier 29 Approve Founding Level	18	02-May-13	22-May-13																	
06.2 - Box Culvert U1																					
0620-2415	U1 Construct Bay 7 - Wall + Roof	0	19-Jan-13 A	29-Jan-13 A	U1 Construct Bay 7 - Wall + Roof																
0620-2467	U1 Construct Bay 5 - ELS	7	30-Jan-13 A	27-Feb-13	U1 Construct Bay 5 - ELS																
0620-2460	U1 Construct Bay 10 - Base Slab	6	28-Feb-13	06-Mar-13	U1 Construct Bay 10 - Base Slab																
0620-2468	U1 Construct Bay 5 - Base Slab	6	28-Feb-13	06-Mar-13	U1 Construct Bay 5 - Base Slab																
0620-2465	U1 Construct Bay 10 - Wall + Roof	6	07-Mar-13	13-Mar-13	U1 Construct Bay 10 - Wall + Roof																
0620-2440	U1 Backfill Bay 5 to 8 + Extract Sheetpiles	18	14-Mar-13	06-Apr-13	U1 Backfill Bay 5 to 8 + Extract Sheetpiles																
0620-2469	U1 Construct Bay 5 - Wall + Roof	6	21-Mar-13	27-Mar-13	U1 Construct Bay 5 - Wall + Roof																
0620-2490	U1 Construct Bay 12 - Base Slab	0	15-Jan-13 A	26-Jan-13 A	U1 Construct Bay 12 - Base Slab																
0620-2495	U1 Construct Bay 12 - Wall + Roof	0	30-Jan-13 A	08-Feb-13 A	U1 Construct Bay 12 - Wall + Roof																
0620-2515	U1 Fabrication of Bay 13 Precast Unit	0	05-Nov-12 A	13-Feb-13 A	U1 Fabrication of Bay 13 Precast Unit																
0620-2480	U1 Bay 10 + 11 + 12 Sheetpiles + ELS	7	07-Nov-12 A	27-Feb-13	U1 Bay 10 + 11 + 12 Sheetpiles + ELS																
0620-2520	U1 Construct Bay 13 - Excavation	12	14-Feb-13 A	05-Mar-13	U1 Construct Bay 13 - Excavation																
0620-2530	U1 Construct Bay 13 - Install Precast Unit	12	06-Mar-13	19-Mar-13	U1 Construct Bay 13 - Install Precast Unit																
0620-2500	U1 Construct Bay 11 - Base Slab	6	07-Mar-13	13-Mar-13	U1 Construct Bay 11 - Base Slab																
0620-2505	U1 Construct Bay 11 - Wall + Roof	6	14-Mar-13	20-Mar-13	U1 Construct Bay 11 - Wall + Roof																
0620-2510	U1 Backfill Bays 11 + 12 + 13	9	20-Mar-13	30-Mar-13	U1 Backfill Bays 11 + 12 + 13																
0620-2380	Divert and Abandon old U1 open channel at VB & III	2	28-Mar-13	30-Mar-13	Divert and Abandon old U1 open channel at VB & III																
06.3 - Admin Building																					
0630-3100	Predrill for Adm Building (55 no) (4 set)	54	02-Apr-13	05-Jun-13																	

- █ Remaining Level of Effort
- █ Actual Level of Effort
- █ Actual Work
- █ Remaining Work
- █ Critical Remaining Work
- ◆ Milestone

Contract HY/2009/19

Three Month Rolling Programme (20 FEB 2013 to 19 MAY 2013)

3MRP

3MRP - Feb 2013 to May 2013

Activity ID	Activity Name	Rem Dur	Start	Finish	2013																
					February					March					April				May		
					21	28	04	11	18	25	04	11	18	25	01	08	15	22	29	06	13
10 - SECTION X OF THE WORKS																					
10.1 - E/B Bridges (Bridge D, E and F)																					
10.1.1 - Marine Pier Construction																					
Pier F03 to F15																					
1011-2150	F3 Pile Cap Shutter Cofferdam	12	23-Jan-13 A	05-Mar-13	F3 Pile Cap Shutter Cofferdam																
1011-2155	F3 Pile Cap Construction	21	06-Mar-13	30-Mar-13	F3 Pile Cap Construction																
1011-2160	F3 Pier/Column Construction	12	02-Apr-13	16-Apr-13	F3 Pier/Column Construction																
1011-2170	F3 Crosshead Construction	12	17-Apr-13	30-Apr-13	F3 Crosshead Construction																
1011-2975	F3 Extract Temp Pile	6	09-May-13	15-May-13	F3 Extr																
1011-2180	F4 Pile Cap Shutter Cofferdam	18	06-Mar-13	26-Mar-13	F4 Pile Cap Shutter Cofferdam																
1011-2185	F4 Pile Cap Construction	15	27-Mar-13	16-Apr-13	F4 Pile Cap Construction																
1011-2190	F4 Pier/Column Construction	12	17-Apr-13	30-Apr-13	F4 Pier/Column Construction																
1011-2200	F4 Crosshead Construction	18	02-May-13	22-May-13																	
1011-2210	F5 Pile Cap Shutter Cofferdam	18	13-Mar-13	04-Apr-13	F5 Pile Cap Shutter Cofferdam																
1011-2215	F5 Pile Cap Construction	18	06-Apr-13	26-Apr-13	F5 Pile Cap Construction																
1011-2220	F5 Pier/Column Construction	12	27-Apr-13	11-May-13	F5 Pier/Column Construction																
1011-2230	F5 Crosshead Construction	18	13-May-13	01-Jun-13																	
1011-2020	F6 Dismantle Piling Platform	12	20-Feb-13*	05-Mar-13	F6 Dismantle Piling Platform																
1011-2240	F6 Pile Cap Shutter Cofferdam	18	20-Mar-13	12-Apr-13	F6 Pile Cap Shutter Cofferdam																
1011-2245	F6 Pile Cap Construction	12	13-Apr-13	26-Apr-13	F6 Pile Cap Construction																
1011-2250	F6 Pier/Column Construction	12	27-Apr-13	11-May-13	F6 Pier/Column Construction																
1011-2260	F6 Crosshead Construction	24	13-May-13	08-Jun-13																	
1011-2030	F7 Dismantle Piling Platform	12	06-Mar-13	19-Mar-13	F7 Dismantle Piling Platform																
1011-2270	F7 Pile Cap Shutter Cofferdam	18	02-Apr-13	23-Apr-13	F7 Pile Cap Shutter Cofferdam																
1011-2275	F7 Pile Cap Construction	12	24-Apr-13	08-May-13	F7 Pile Cap Construction																
1011-2280	F7 Pier/Column Construction	12	09-May-13	22-May-13																	
1011-2300	F8 Pile Cap Shutter Cofferdam	18	27-Apr-13	18-May-13	F8																
1011-2050	Dismantle Piling Platform at Pier F9	12	20-Mar-13	04-Apr-13	Dismantle Piling Platform at Pier F9																
1011-1970.5	Pier F10 Dolphin Socketed H-Pile P4	0	15-Jan-13 A	06-Feb-13 A	Pier F10 Dolphin Socketed H-Pile P4																
1011-1970.6	Pier F10 Dolphin Socketed H-Pile P6	0	15-Jan-13 A	07-Feb-13 A	Pier F10 Dolphin Socketed H-Pile P6																
1011-2060	Dismantle Piling Platform at Pier F10	12	06-Apr-13	19-Apr-13	Dismantle Piling Platform at Pier F10																
1011-1770.5	Pier F11 Dolphin Socketed H-Pile P4	2	26-Jan-13 A	21-Feb-13	Pier F11 Dolphin Socketed H-Pile P4																
1011-1770.6	Pier F11 Dolphin Socketed H-Pile P6	4	26-Jan-13 A	23-Feb-13	Pier F11 Dolphin Socketed H-Pile P6																
1011-2070	Dismantle Piling Platform at Pier F11	12	20-Apr-13	04-May-13	Dismantle Piling Platform at Pier F11																
1011-1822.1	Pier F12 Dolphin Socketed H-Pile P1	0	04-Jan-13 A	31-Jan-13 A	Pier F12 Dolphin Socketed H-Pile P1																
1011-1822.2	Pier F12 Dolphin Socketed H-Pile P2	0	04-Jan-13 A	01-Feb-13 A	Pier F12 Dolphin Socketed H-Pile P2																
1011-1822.4	Pier F12 Dolphin Socketed H-Pile P5	0	04-Jan-13 A	02-Feb-13 A	Pier F12 Dolphin Socketed H-Pile P5																
1011-1822.3	Pier F12 Dolphin Socketed H-Pile P3	10	04-Jan-13 A	02-Mar-13	Pier F12 Dolphin Socketed H-Pile P3																
1011-1822.5	Pier F12 Dolphin Socketed H-Pile P4	6	01-Feb-13 A	26-Feb-13	Pier F12 Dolphin Socketed H-Pile P4																
1011-1822.6	Pier F12 Dolphin Socketed H-Pile P6	7	01-Feb-13 A	27-Feb-13	Pier F12 Dolphin Socketed H-Pile P6																
1011-2075	Dismantle Piling Platform at Pier F12	12	06-May-13	18-May-13	Dis																
1011-1890.50	Pier F13 Dolphin Socketed H-Pile 4	0	31-Dec-12 A	24-Jan-13 A	Pier F13 Dolphin Socketed H-Pile 4																
1011-1782.50	Pier F14 Dolphin Socketed H-Pile 4	0	17-Jan-13 A	04-Feb-13 A	Pier F14 Dolphin Socketed H-Pile 4																
1011-1782.60	Pier F14 Dolphin Socketed H-Pile 6	0	17-Jan-13 A	05-Feb-13 A	Pier F14 Dolphin Socketed H-Pile 6																

- █ Remaining Level of Effort
- █ Actual Level of Effort
- █ Actual Work
- █ Remaining Work
- █ Critical Remaining Work
- ◆ Milestone

Contract HY/2009/19

Three Month Rolling Programme (20 FEB 2013 to 19 MAY 2013)

3MRP

3MRP - Feb 2013 to May 2013

Page 5 of 7

Activity ID	Activity Name	Rem Dur	Start	Finish	2013																
					February					March					April					May	
					21	28	04	11	18	25	04	11	18	25	01	08	15	22	29	06	13
1011-3005	Design of Temporary Parapet for IEC at Pier F8 to F14	36	20-Feb-13	04-Apr-13	Design of Temporary Parapet for IEC at Pier F8 to F14																
1011-3035	Submit MS for Construction of Temp Parapet at IEC Bridge	18	20-Feb-13	12-Mar-13	Submit MS for Construction of Temp Parapet at IEC Bridge																
1011-3045	Approve MS for Construction of Temp Parapet at IEC Bridge	18	13-Mar-13	04-Apr-13	Approve MS for Construction of Temp Parapet at IEC Bridge																
1011-3015	Demolition of IEC Bridge Parapet at Pier F8 to F14	36	06-Apr-13	18-May-13	Demolition of IEC Bridge Parapet at Pier F8 to F14																
1011-3025	Construct IEC Bridge Temp Parapet at Pier F8 to F14	36	20-Apr-13	01-Jun-13	Construct IEC Bridge Temp Parapet at Pier F8 to F14																
Pier F01 to F02																					
1011-2860	F1A Pile Cap Shutter Cofferdam	0	03-Jan-13 A	23-Jan-13 A	F1A Pile Cap Shutter Cofferdam																
1011-2865	F1A Pile Cap Construction	12	24-Jan-13 A	05-Mar-13	F1A Pile Cap Construction																
1011-2870	F1A Pier/Column Construction	12	06-Mar-13	19-Mar-13	F1A Pier/Column Construction																
1011-2880	F1A Crosshead Construction	18	20-Mar-13	12-Apr-13	F1A Crosshead Construction																
1011-2800	F2A Pile Cap Shutter Cofferdam	0	10-Jan-13 A	19-Feb-13 A	F2A Pile Cap Shutter Cofferdam																
1011-2805	F2A Pile Cap Construction	21	20-Feb-13	15-Mar-13	F2A Pile Cap Construction																
1011-2810	F2A Pier/Column Construction	12	16-Mar-13	30-Mar-13	F2A Pier/Column Construction																
1011-2820	F2A Crosshead Construction	18	02-Apr-13	23-Apr-13	F2A Crosshead Construction																
1011-2995	Bridge F1A Bearing Installation	6	02-May-13	08-May-13	Bridge F1A Bearing Installation																
1011-2830	F2B Pile Cap Shutter Cofferdam	3	17-Jan-13 A	22-Feb-13	F2B Pile Cap Shutter Cofferdam																
1011-2835	F2B Pile Cap Construction	21	06-Mar-13	30-Mar-13	F2B Pile Cap Construction																
1011-2840	F2B Pier/Column Construction	12	02-Apr-13	16-Apr-13	F2B Pier/Column Construction																
1011-2850	F2B Crosshead Construction	18	17-Apr-13	08-May-13	F2B Crosshead Construction																
1011-2965	Extract Temp Pile at F1 and F2	12	24-Apr-13	08-May-13	Extract Temp Pile at F1 and F2																
10.1.2 - Land Pier Construction																					
Pier D08 to D11																					
1012-1120	Pier D08 Construct Crosshead	0	21-Jan-13 A	02-Feb-13 A	Pier D08 Construct Crosshead																
1012-1125	Bearing Installation Pier D8 + D9 + D10	4	21-Feb-13	25-Feb-13	Bearing Installation Pier D8 + D9 + D10																
1012-1580	Bearing Installation Pier D11 + D12	6	13-Apr-13	19-Apr-13	Bearing Installation Pier D11 + D12																
Pier D05 to D07																					
1012-1290.20	Pier D05 Bored Pile D05-1	12	02-May-13	15-May-13	Pier D05 Bored Pile D05-1																
10.1.3 - E/B Bridge Construction																					
Bridge D3																					
1013-1010	Segment and Beam Launching Girder - Fabrication	0	05-Nov-12 A	06-Feb-13 A	Segment and Beam Launching Girder - Fabrication																
1013-1012	Segment and Beam Launching Girder - Off-Site Launching Trial	0	26-Jan-13 A	06-Feb-13 A	Segment and Beam Launching Girder - Off-Site Launching Trial																
1013-1015	Segment and Beam Launching Girder - Deliver to Site	9	07-Feb-13 A	01-Mar-13	Segment and Beam Launching Girder - Deliver to Site																
1013-1020	Segment and Beam Launching Girder - Assembly	12	02-Mar-13	15-Mar-13	Segment and Beam Launching Girder - Assembly																
1013-1025	Segment and Beam Launching Girder - Erection	18	13-Mar-13	04-Apr-13	Segment and Beam Launching Girder - Erection																
1013-1030	Segment and Beam Launching Girder - Load Test	7	06-Apr-13	13-Apr-13	Segment and Beam Launching Girder - Load Test																
1013-1760	Pierhead Segment Erection D8 + D9 + D10	6	27-Feb-13	05-Mar-13	Pierhead Segment Erection D8 + D9 + D10																
1013-1050	Bridge D3 Segment Launching from Pier D09 (16 nos)	6	15-Apr-13	20-Apr-13	Bridge D3 Segment Launching from Pier D09 (16 nos)																
1013-1055	Bridge D3 Segment Launching from Pier D08 (7 nos)	2	22-Apr-13	23-Apr-13	Bridge D3 Segment Launching from Pier D08 (7 nos)																
1013-1090	Bridge D3 Stitching at midspan between D8 and D9	3	24-Apr-13	26-Apr-13	Bridge D3 Stitching at midspan between D8 and D9																
1013-1060	Bridge D3 Segment Launching from Pier D10 (17 nos)	6	27-Apr-13	04-May-13	Bridge D3 Segment Launching from Pier D10 (17 nos)																
1013-1100	Bridge D3 Stitching at midspan between D9 and D10	3	06-May-13	08-May-13	Bridge D3 Stitching at midspan between D9 and D10																
10.1.4 - Bridge E / Hing Fat Slip Road																					
Pier Construction																					
1014-1010	Pier E1b-4 Bored Pile	1	12-Jan-13 A	20-Feb-13	Pier E1b-4 Bored Pile																

- Remaining Level of Effort
- Actual Level of Effort
- Actual Work
- Remaining Work
- Critical Remaining Work
- ◆ Milestone

Contract HY/2009/19

Three Month Rolling Programme (20 FEB 2013 to 19 MAY 2013)

3MRP

3MRP - Feb 2013 to May 2013

Activity ID	Activity Name	Rem Dur	Start	Finish	2013																
					February					March					April				May		
					21	28	04	11	18	25	04	11	18	25	01	08	15	22	29	06	13
1014-1220	Pier E1b-1 Bored Pile	18	21-Feb-13	13-Mar-13	Pier E1b-1 Bored Pile																
10.3 - Middle Bridge (Bridge F)																					
10.3.1 - Pier Construction																					
Abutment D12																					
1031-1053	Bored pile D12-12 (low headroom)	2	14-Jan-13 A	21-Feb-13	Bored pile D12-12 (low headroom)																
1031-1055	Bored pile D12-05 (low headroom)	30	22-Feb-13	28-Mar-13	Bored pile D12-05 (low headroom)																
10.6 - Tunnel Approach Ramp																					
10.6.1 - Approach Ramp (Excluding Portion IIB)																					
Bored Piles																					
1061-1500	Bored Pile Ramp - BN41	0	14-Jan-13 A	24-Jan-13 A	Bored Pile Ramp - BN41																
1061-1510	Bored Pile Ramp - BN44	0	25-Jan-13 A	08-Feb-13 A	Bored Pile Ramp - BN44																

- Remaining Level of Effort
- Actual Level of Effort
- Actual Work
- Remaining Work
- Critical Remaining Work
- ◆ Milestone

Contract HY/2009/19

Three Month Rolling Programme (20 FEB 2013 to 19 MAY 2013)

3MRP

3MRP - Feb 2013 to May 2013

Page 7 of 7